

DATA PROCESSING FOR THE INSTITUTIONAL STUDENT'S SURVEY

In CIT Institutional Student's Survey 2022-2023 participated 163 students from Bachelor and Master programs.

Respectively:

- 75.5% Bachelor Program
- 24.5 Master of Sciences program

The years of studying at CITY of the students who answered the questionnaire are as following:

Bachelor program students:

- First year – 60
- Second year - 41
- Third year – 22

Master programs students:

- First year - 23
- Second year – 17

To the questions - *I am enrolled at CIT because* the student responded:

- 4.3% - Because my friend is a student there
- 7.4% - Because of its location
- 4.9% - Because of reasonable costs
- 20.2% - Because of its academic reputation
- 36.2% - Because of programs offered
- 1.8% - Because of my high school counselor's recommendations
- 12.8%- Because of recommendations from friends
- 12.3% Other

To the questions - How would you prefer to receive important information from CIT:

- CIT e-mail- 83.4%
- Social Media- 9.2%
- CIT Website - 7.4%

The questionnaire was organized to include the following areas for data collection:

- Infrastructure and communication – 3 questions
- Academic Staff, Course & Teaching - 3 Questions

- Students Satisfaction - 4 Questions

THE ANALYSIS FOR EACH AREA

❖ INFRASTRUCTURE AND COMMUNICATION

Asked to rate the level of agreement with the following statement about CIT *Infrastructure* the students responded:

-Computer labs are accessible

- Excellent - 56
- Very good - 49
- Good - 35
- Fair - 15
- Poor – 8

From 163 of total responses, 140 of the respondents (84.8%) confirms that labs are accessible.

-CIT website is user-friendly

- Excellent 52
- Very good 67
- Good 30
- Fair 8
- Poor 6

From 163 of total responses, 149 of the respondents (91.4%) confirms that the CIT website is user-friendly.

-Internet connectivity is sufficient:

- Excellent 46
- Very good 55
- Good 30
- Fair 17
- Poor 15

From 163 of total responses, 131 of the respondents (80.3%) confirms that internet connectivity is sufficient.

-The whole campus is clean

- Excellent 71
- Very good 65
- Good 15
- Fair 7

- Poor 5

From 163 of total responses, 151 of the respondents (92.6%) confirms that the campus is clean.

-The campus is well maintained

- Excellent 57
- Very good 68
- Good 25
- Fair 8
- Poor 5

From 163 of total responses, 151 of students (92.6%) confirms that the campus is well maintained.

-Library is open and accessible during all the time

- Excellent 78
- Very good 55
- Good 22
- Fair 4
- Poor 4

From 163 of total responses, 155 of the respondents (95%) confirms that the library is accessible at all time.

- Asked to rate the level of agreement with the following statement about CIT *communication* the students responded:

- Professors are open for communicating with students

- Strongly Agree 68
- Agree 70
- Neutral 16
- Disagree 6
- Strongly Disagree 3

From 163 of total responses, 138 of the respondents (84.6%) confirms that the professors are open for communicating with them. 5.5% of them thinks differently

-Professors motivate students to present their opinions

- Strongly Agree 58
- Agree 69
- Neutral 20
- Disagree 11
- Strongly Disagree 5

From 163 of total responses, 127 of the respondents, (77.9%) confirms that the professors motivate them to present their opinions. 9.4% thinks differently.

-Professors care about students' physical presence and student involvement

- Strongly Agree - 63
- Agree - 66
- Neutral - 24
- Disagree - 5
- Strongly Disagree - 5

From 163 of total responses, 129 of the respondents, (76.3%) confirms that the professors care about the involvement and physical presence in class.

-Students' evaluations are done quite objectively:

- Strongly Agree - 53
- Agree - 59
- Neutral -30
- Disagree - 15
- Strongly Disagree – 6

From 163 of total responses, 122 of the respondents, (72.1%) confirms that the evaluation is done quite objectively. 12.4% of them disagrees.

➤ *Asked to rate the level of agreement with the following statement the students responded:*

- I feel a sense of belonging at CIT

- Strongly Agree - 50
- Agree -49
- Neutral - 40
- Disagree - 14
- Strongly Disagree – 10

58.57% of the students feel a sense of belonging at CIT and 14.7% disagrees with this statement.

-I am proud of telling others that I am a CIT student

- Strongly Agree - 54
- Agree - 58
- Neutral - 31
- Disagree - 9
- Strongly Disagree - 11

68.7% of the students confirmed that are proud to tell other that they are CIT students.

12.2% disagrees with this statement.

-Employees across campuses are generally helpful and approachable

- Strongly Agree - 66
- Agree - 71
- Neutral -18
- Disagree - 6
- Strongly Disagree - 2

84.04% of the students agrees the employees across campuses are generally helpful and approachable.

-I feel informed about what is happening on campus

- Strongly Agree - 53
- Agree - 66
- Neutral - 29
- Disagree - 8
- Strongly Disagree – 6

73% of the students agrees they feel informed about what's happening on campus and 8.5% disagrees with the statement.

-I would recommend CIT to a friend or family member:

- Strongly Agree - 58
- Agree - 51
- Neutral - 27
- Disagree - 16
- Strongly Disagree -11

66.8% of the student would recommend CIT to a friend or family member.

❖ **ACADEMIC STAFF, COURSES & TEACHING**

- Asked to rate the level of agreement with the following statement about course content the students responded:

-Theory taught courses are related with job market reality:

- Strongly Agree - 42
- Agree - 47
- Neutral - 43

- Disagree - 23
- Strongly Disagree -11

54.6% of the students thinks that the theory taught courses are related with job market reality, and 20.8% of them disagrees with the statement.

-Courses are updated periodically

- Strongly Agree - 51
- Agree - 57
- Neutral - 38
- Disagree - 10
- Strongly Disagree -7

66.2% of the students thinks that the courses are update periodically and 10.4% of them thinks differently.

-The courses I have attended are well connected between the theory and practical activities

- Strongly Agree - 45
- Agree - 45
- Neutral - 35
- Disagree - 29
- Strongly Disagree -9

55.2% of the students thinks that the theory and practical activities of the courses are well connected and 23% of them disagrees with this statement.

-Professors take care of course quality

- Strongly Agree - 50
- Agree - 72
- Neutral - 24
- Disagree - 13
- Strongly Disagree – 4

74% of the students think that the professors take care of the course quality. 10.4% of them disagrees with this statement

-Professors give feedback for assessment and examinations

- Strongly Agree - 47
- Agree - 70
- Neutral - 32
- Disagree - 9
- Strongly Disagree -5

71.7% of the students think that the professors give them feedback for assessment and examinations and 8.5% thinks differently.

-Professors use to make up missing class hours:

- Strongly Agree - 57
- Agree - 86
- Neutral - 12
- Disagree - 5
- Strongly Disagree -3

87.7% of the students confirms that the professors make up missing class hours.

-Some professors place useful work assignment

- Strongly Agree - 41
- Agree - 23
- Neutral - 42
- Disagree - 42
- Strongly Disagree -15

39% of the student thinks that some professors place useful work assignment and 34.9% disagrees with this statement.

➤ Asked how would you rate the following aspects of their educational experience the students responded:

- Quality of the teaching faculty

- Excellent - 31
- Very Good- 63
- Good - 41
- Fair - 19
- Poor -9

82.8% of students are satisfied with the quality of teaching in the faculty, 17.1% of the students disagree with the statement.

-Academic advising

- Excellent - 34
- Very Good - 62
- Good - 38
- Fair - 17
- Poor -12

82.2% of the students are satisfied with academic advising, and 17.7% disagree with the statement.

-Academic reputation of CIT:

- Excellent - 38
- Very Good - 66
- Good - 32
- Fair - 16
- Poor -11

83.4% of the students are satisfied with the academic reputation of CIT and 16.5% disagree with the statement

-Value of the education for the price

- Excellent - 36
- Very Good - 55
- Good - 30
- Fair - 27
- Poor -15

74.2% of the students agree that the value of the education in CIT correspond to the price, and 9.2% disagree with this statement.

➤ Asked to rate the following aspects of student life at the university the students responded:

-Sport and recreation

- Excellent -38
- Very Good -51
- Good - 44
- Fair - 15
- Poor – 15

81.5% of the students are satisfied with sport and recreation activities.

-Clubs and student organization

- Excellent - 42
- Very Good - 56
- Good - 37
- Fair -14
- Poor - 14

82.8% of the students are satisfied with clubs and student organization

-Student diversity

- Excellent 45
- Very Good - 58
- Good -36
- Fair -14
- Poor - 10

85.2% of the students thinks that CIT has diversity.

-Campus safety

- Excellent - 65
- Very Good -66
- Good -24
- Fair - 5
- Poor -3

95% of the student thinks that the campus is safe.

-Extracurricular activities

- Excellent -37
- Very Good - 62
- Good -42
- Fair -12
- Poor -10

86.5% of the student are satisfied with the extracurricular activities

-Student safety

- Excellent - 63
- Very Good - 62
- Good -29
- Fair -5
- Poor -4

94.4% of the students feel safe at CIT.

-Social life

- Excellent -39
- Very Good - 65
- Good -33
- Fair - 16
- Poor – 10

84% of the student are satisfied with the social life at CIT.

❖ STUDENTS SATISFACTION

-Asked in overall how satisfied are with the educational experience at CIT the student responded:

1. Very satisfied - 16%
2. Satisfied - 40.5%
3. Neutral -29.4%
4. Dissatisfied – 10.4%
5. Very Dissatisfied – 3.7%

56.5% of the students responded they are very ore satisfied with they educational experience at CIT and 14.1% are not satisfied.

-Asked in how satisfied are with the university policies the student responded:

1. Very satisfied – 20.9%
2. Satisfied – 35.6%
3. Neutral -23.9%
4. Dissatisfied – 14.7%
5. Very Dissatisfied – 4.9%

56.5% of the students are satisfied with the policies of the institution.

-Asked if they feel job-competent for when you move on from this university the student responded:

- Yes – 54%
- No – 13.3%
- Unsure – 30.7%

-Asked if they with recommend CIT to others the student responded:

- Yes – 67.5%
- No –12.3%
- Unsure –20.2%

CONCLUSIONS

From the questioner response is clear that the majority of the student enroll in CIT because of CIT academic reputation and the programs that the institution offers.

CIT students confirmed that they prefer receiving important information from CIT from e-mail, as they do now by (83.4%).

In overall 67.5% of the students confirmed that they would recommend CIT to others. The students confirmed that they are satisfied with the quality of teaching in the faculty, with academic advising and the he academic reputation of CIT (83.4%).

The students confirmed that they feel safe at CIT (94.4%) and that the campus is a safe place (95%). They are satisfied with the extracurricular activities and the social life at CIT.

I. About the infrastructure and communication at CIT student stated that:

- The labs are accessible
- the website is user-friendly.
- The internet connectivity is sufficient.
- the campus is clean.
- the campus is well maintained.
- the library is accessible at all time.
- the professors are open for communicating with them.
- the professors motivate them to present their opinions.
- the employees across campuses are generally helpful and approachable.
- they feel informed about what’s happening on campus

II. About the Academic Staff, Courses & Teaching, the student stated that:

- the courses are update periodically
- the professors take care of the course quality
- the professors give them feedback for assessment and examinations
- the professors make up missing class hours.
- the quality of teaching in the faculty is very good,
- they are satisfied with academic advising
- they are satisfied with the academic reputation of CIT

III. About the student life & satisfaction the student stated that:

- are satisfied with sport and recreation activities.
- are satisfied with clubs and student organization
- the campus is safe.
- are satisfied with the extracurricular activities and social life at CIT.

SUGGESTIONS

The students evaluated that:

- To rise the number of courses related to the job position in market
- To have open lectures with experience technicians coming from big companies
- Credit recognition from other university ore dual degrees
- Having a job fair at CIT
- Having un updated CIT newsletter

STUDENT SURVEY

163 responses

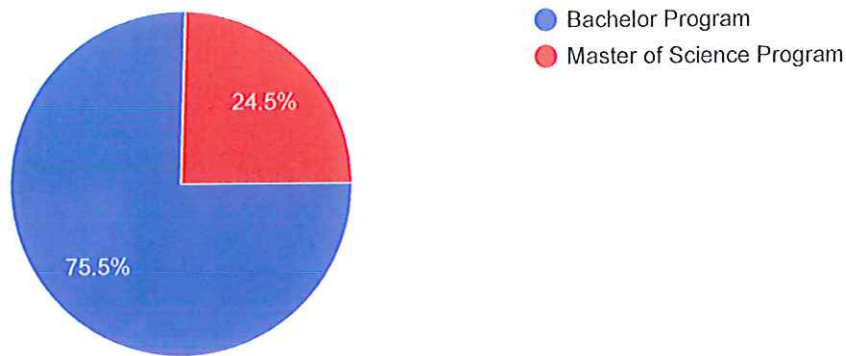
[Publish analytics](#)

A. GENERAL INFORMATION

1. My program:

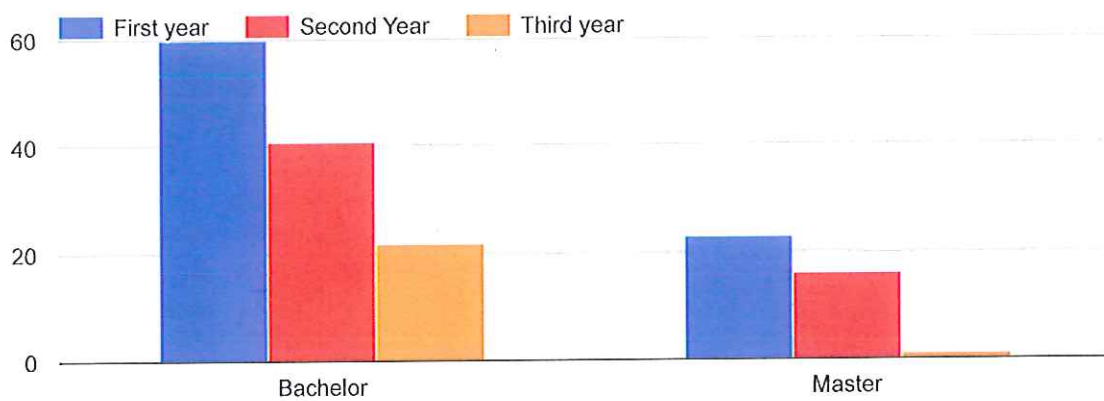
 Copy

163 responses



2. My year of studies:

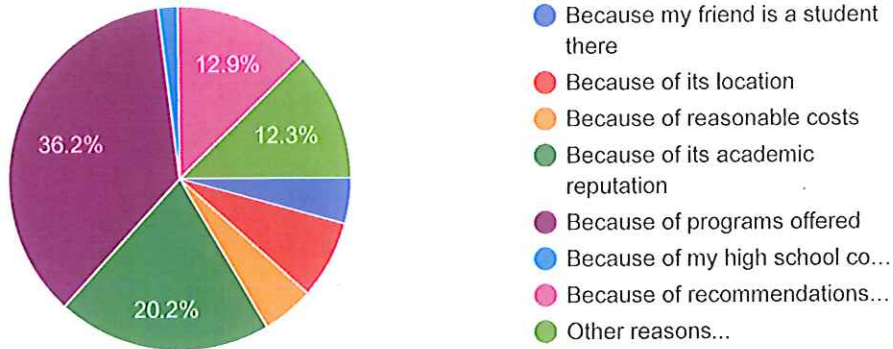
 Copy



3. I am enrolled at CIT



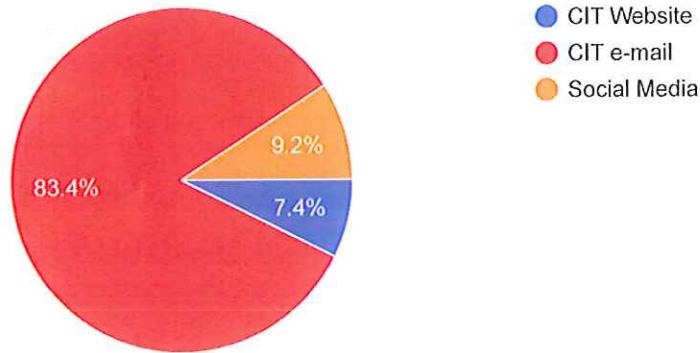
163 responses



4. How would you prefer to receive important information from CIT?

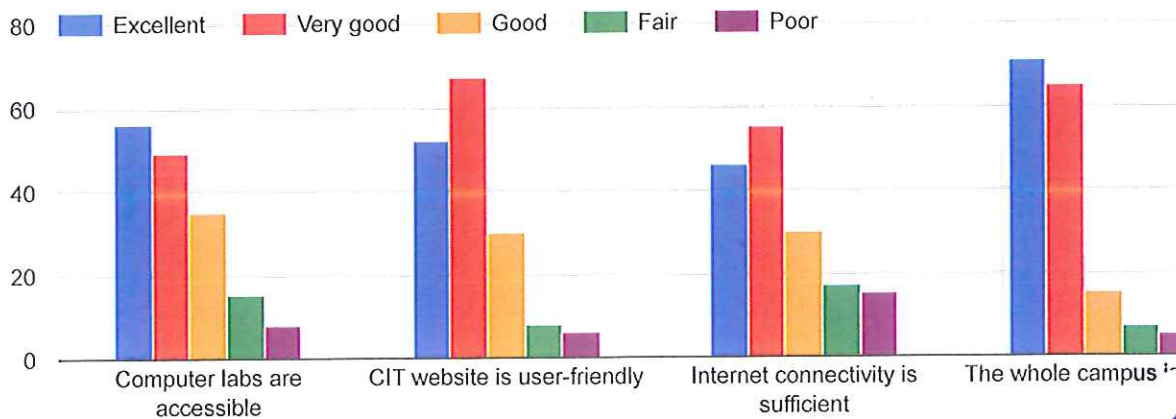


163 responses

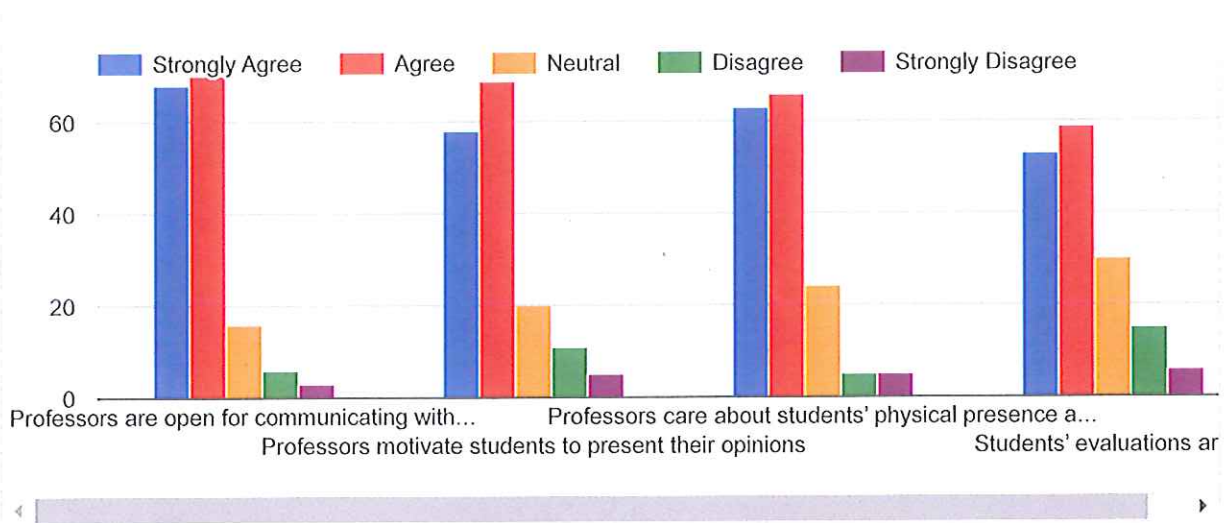


B. INFRASTRUCTURE AND COMMUNICATION

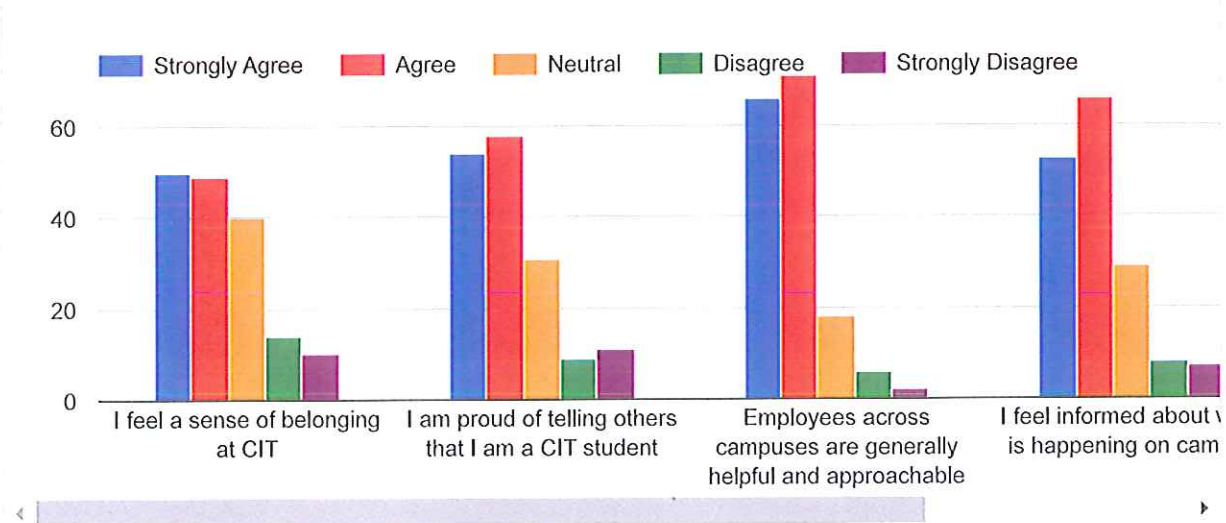
5. Please rate your level of agreement with the following statement about CIT Infrastructure:



6. Please rate your level of agreement with the following statements about communication at CIT



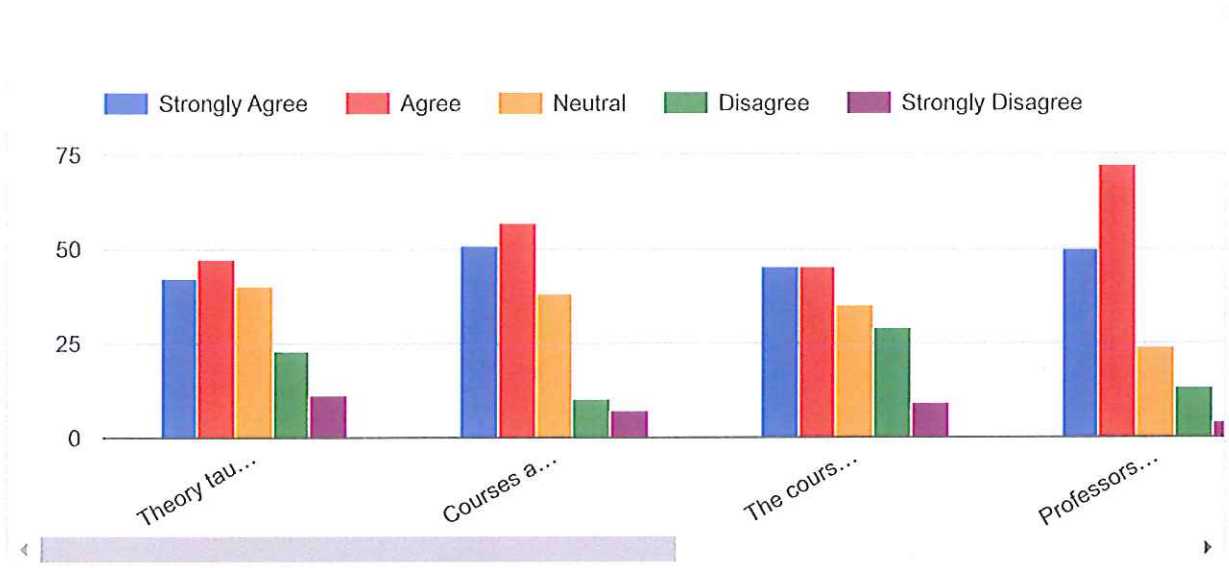
7. Please rate your Level of agreement with the following statements:



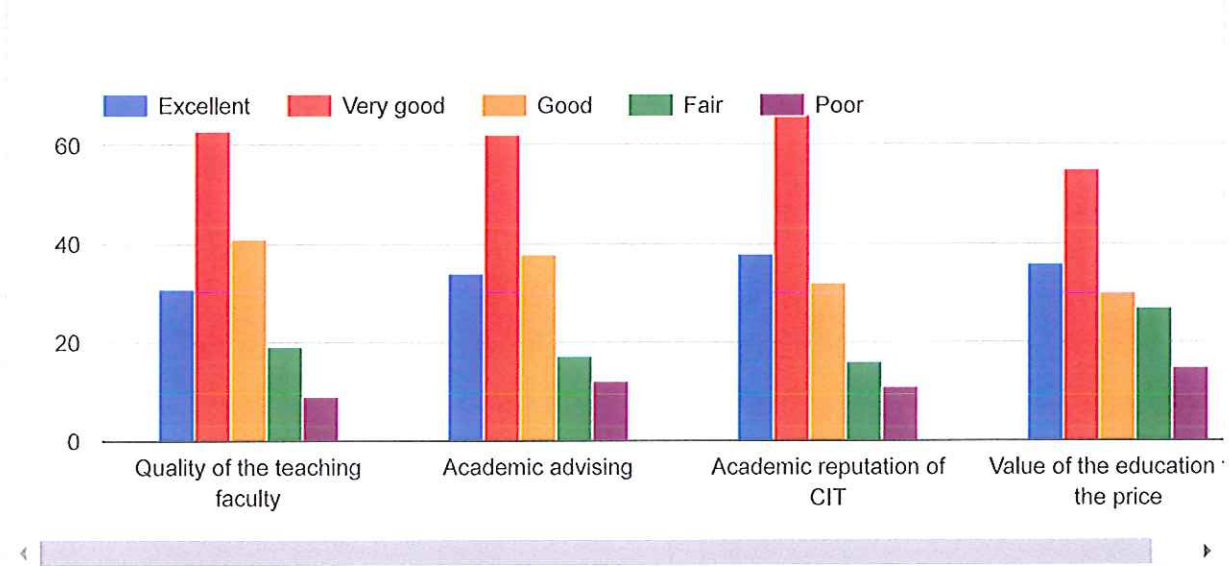
C. ACADEMIC STAFF, COURSES & TEACHING



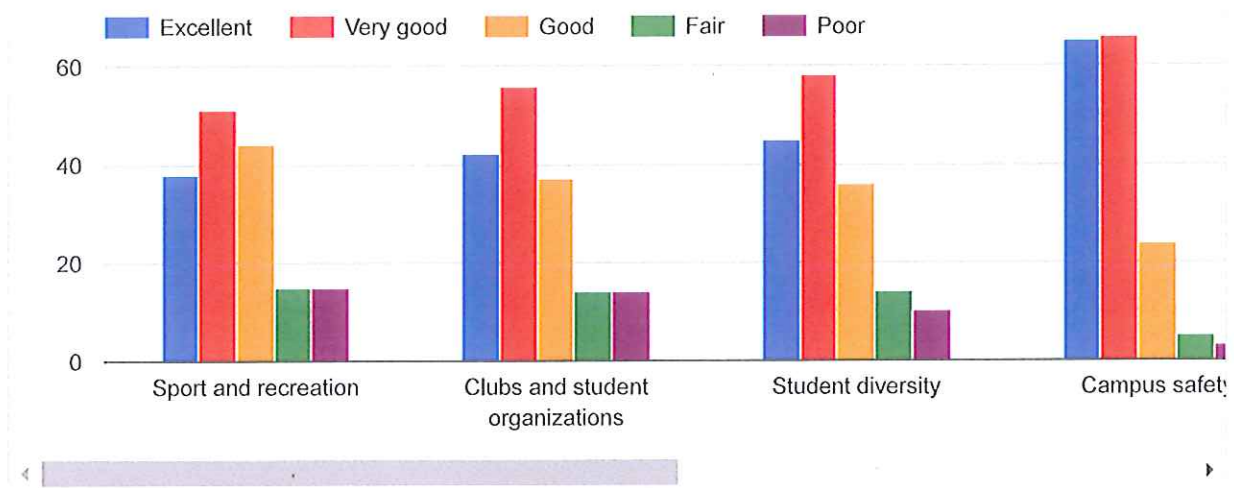
8. Please rate your level of agreement with the following statements about course content:



9. How would you rate the following aspects of your educational experience:



10. How would you rate the following aspects of student life at the university:

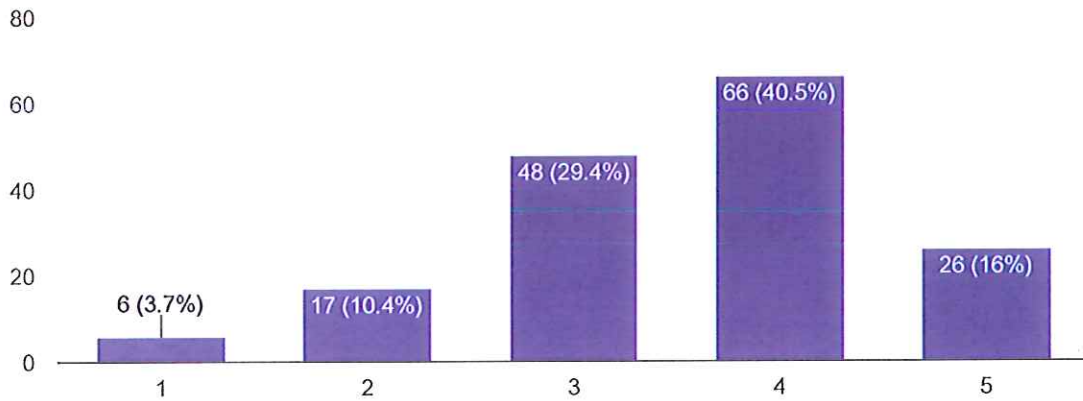


D. STUDENTS SATISFACTION

11. Overall, how satisfied are you with your educational experience at CIT? Rate from 1 (Very dissatisfied) - 5 (Very satisfied).



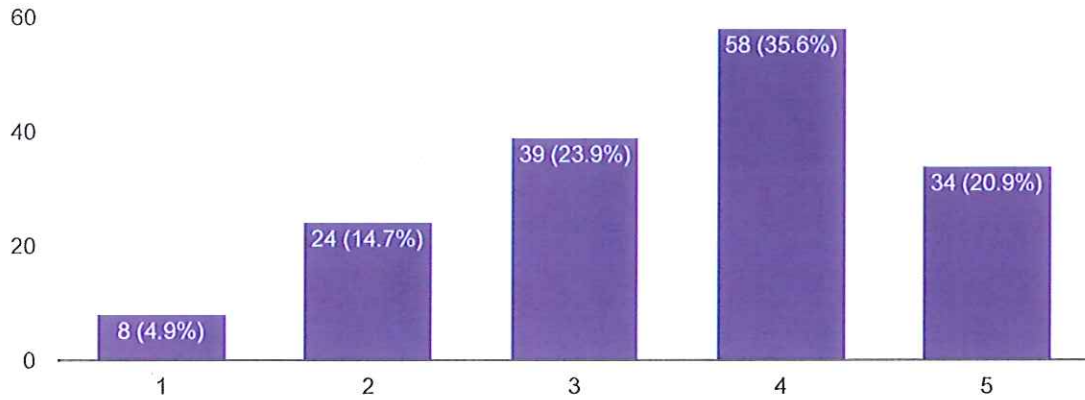
163 responses



12. How satisfied are you with the university policies? Rate from 1 (Very dissatisfied) - 5 (Very satisfied).



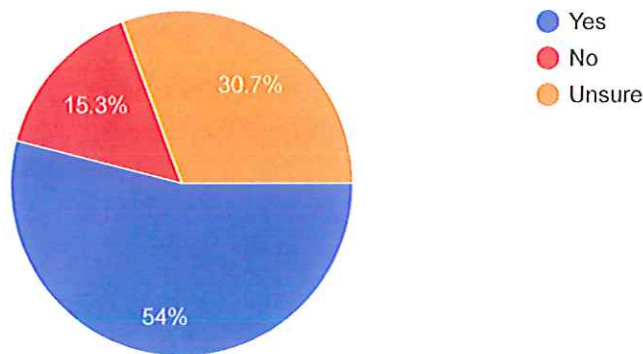
163 responses



13. Do you feel job-competent for when you move on from this university?



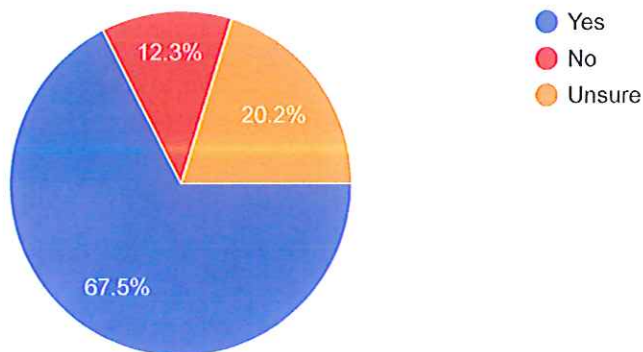
163 responses



14. Will you recommend CIT to others?



163 responses



This content is neither created nor endorsed by Google. [Report Abuse](#) - [Terms of Service](#) - [Privacy Policy](#)

